

SUPER 123

Stock Room Shelving



MAKE THE BEST USE OF YOUR STORAGE SPACE



PAGE 2

- * Delivery **7** working days to mainland UK
- * Competitive prices
- * Easy to build systems
- * Many size options
- * Ideal for garment storage
- * Excellent appearance for display area and the stockroom

- * Delivery **10** working days to mainland UK
- * Competitive prices
- * Superb powder coated finish
- * Excellent size combinations
- * Great appearance for shops and showrooms
- * Easy adjustable shelves

TOP SHELF Gondola Display Shelving



PAGE 8



PAGE 7

Distributed by:

« **NEW** extreme Plastic Lockers

See back cover for further details.



▲ **Super 123** is a hard wearing, industrial standard shelving system that is easy to build without nuts and bolts. All the components are zinc galvanised giving a smooth but very enduring surface. The shelves are adjustable up and down on a 33mm module.

“All the components are zinc galvanised giving a smooth but very enduring surface”

Available sizes

Height	Shelf Lengths	Shelf Depths
up to 5000mm	900mm	320mm
up to 5000mm	1200mm	400mm
up to 5000mm	1500mm	500mm
up to 5000mm	1800mm	600mm
up to 5000mm		800mm

Please note that an 1800 x 800mm shelf is not available. Please contact your distributor for prices and weight loadings.



▲ **Super 123** can be used in Greenhouse applications due to its galvatite finish. It also makes an excellent display shelving in this context. It is also a perfect shelving system for general storage purposes.



◀ One of the most useful features of **Super 123** is that it is a superb garment hanging and storage system. Garment racks can be created in single and double sided versions. The garment racks can also incorporate shelves in the same bays.

“The cost effective solution to garment storage”

▼ Higher levels of storage are best accessed using a set of mobile warehouse steps. Garment racks can be designed in any height up to 5 metres.





▲ The modular containers are excellent substitutes for flat shelves and enable the storage of loose unboxed parts which would not be stable on a flat shelf. The modular containers are available in four shelf depths 320mm, 400mm, 500mm and 600mm.



▲ Tyre racking is simple using 400mm wide frames and omitting the steel shelves. Any height is available up to 5 metres.

“Modular containers are available in four shelf depths 320mm, 400mm, 500mm and 600mm.”



▲ This rack has been specially designed for garage storage. It is 2 metres high and 410mm front to back. It has an overall length of nominally 2.8 metres. It has a combination of nine flat shelves and six modular containers. Each modular container comes with four dividers.



▶ Chipboard shelves substitute for the normal steel panels in this tailor made body panel storage rack. The tubular dividers are 12mm steel conduits.



◀ This packing bench can hold and dispense two rolls of material whilst providing a hard wearing packing surface. There is also a lower shelf for storage of tools.



▲ This rack demonstrates the many accessories available with the **Super 123** system. Mesh cladding is very useful for preventing the loose stock items from rolling onto other shelves whilst enabling air circulation and light penetration. There are four different types of divider:

- Free standing
- Tubular
- Divider box
- Modular containers.



◀ The underside of each **Super 123** shelf is heavily ribbed enabling the system to have maximum strength from minimum amount of steel.



◀ Archive storage is an inevitable consequence of running any business in these days of compliance. Many records have to be kept for seven years to satisfy the requirements of the Inland Revenue or Insurers. **Super 123** using 1800mm x 500mm shelves, creates the perfect rack for archive boxes. Both boxes and shelving are available together or separately.

“Archive storage is an inevitable consequence of running any business in these days of compliance”

▶ This industrial shelving system has been adapted to make a bay suitable for domestic use. It assembles with ease and has all the attributes which make it popular in industry.

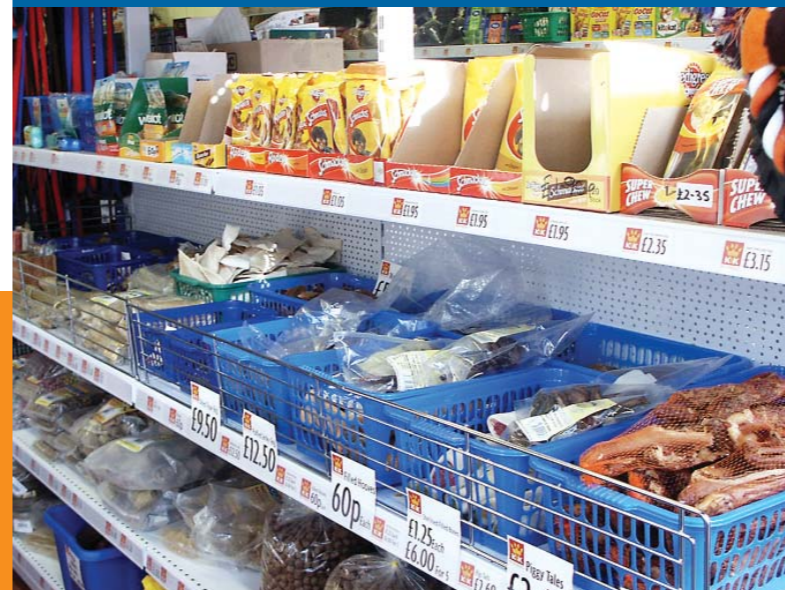


▶ This generic front of house Gondola style display shelving is perfect for many retail applications. It is simple to build and comes in:

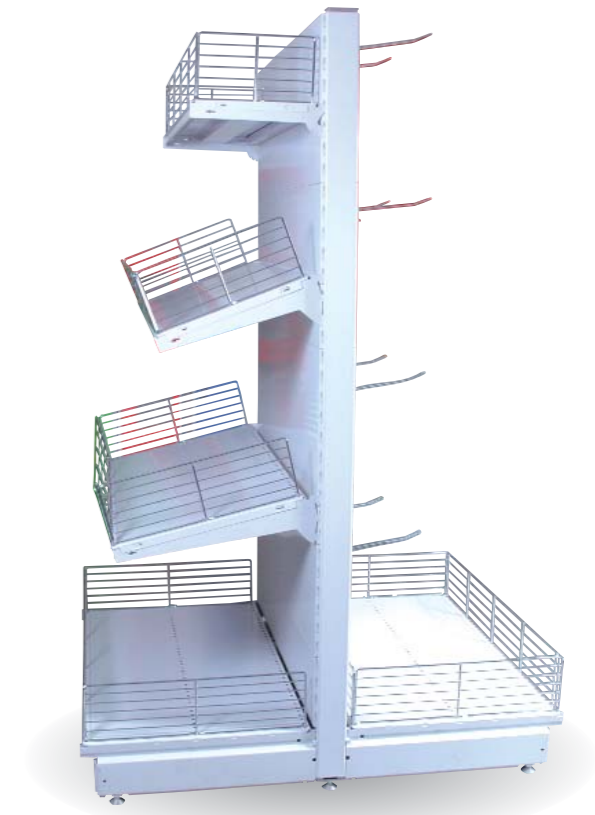
- **Three heights:**
1560mm, 1960mm and 2360mm
- **Two Base depths:**
500mm and 600mm
- **Four shelf depths:**
300mm, 400mm, 500mm and 600mm
- **Three shelf lengths:**
665mm, 1000mm, 1330mm.



“The system is in stock and available within 7 working days”



◀ Shelves can be horizontal or slope downwards. Wire dividers are available in three heights 30mm, 80mm and 160mm. The bases have adjustable feet to compensate for slightly uneven floors.



NEW **eXtreme** Plastic Lockers



- ▲ These **NEW** revolutionary lockers are hard-wearing and easily washable. They can take far more punishment than a conventional locker and can be located in a damp and cold environment like cycle shelters (above).

- ▶ Great appearance with blue, red, yellow and green coloured doors. There are drain holes for internal wash-down and optional sloping tops that can be retro fitted.

- * *Three sizes (450, 600, 900mm high) of locker that are all stackable with one another. Base size of all three lockers is 320 x 460mm*
- * *Suitable for outdoor use as well as wash down areas and wet changing rooms*
- * *The tough polyethylene material is highly vandal resistant*
- * *Three lock types available with cam and swivel catch as standard options plus coin return for wet and dry environments*



eXtreme Plastic Lockers

Ideal for:

- * **Outdoor Storage** * **Swimming Pool Areas**
- * **Wet Changing Areas** * **Schools**
- * **Cycle Shelters** * **Sports Clubs & Associations**

- * *Retro fit sloping top for hygiene areas*
- * *Grey bodies with blue, red, yellow and green doors are standard. Other colours are available*
- * *Very strong hinge that can withstand 3200N before breaking*
- * *Label position and air vents on all door sizes*
- * *Easily stacked and nested with specially marked fixing points*

- ▼ Very popular with schools as the lockers can be positioned externally (below) for massive space saving opportunities inside school buildings.



- ▲ ▶ With improved stackability and easy nesting these lockers are ideal for schools, wet changing area and outdoor storage.

